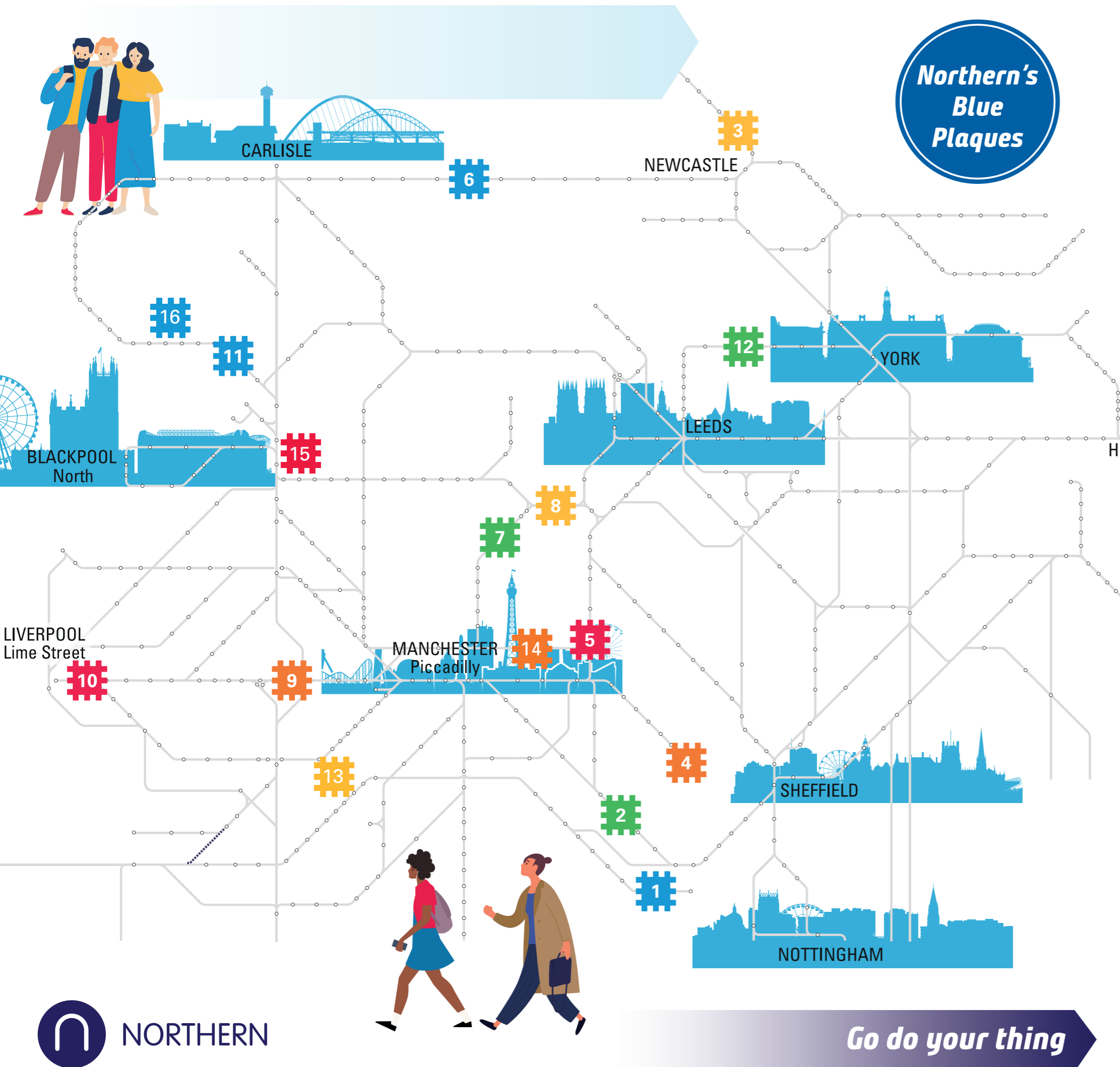




Northern's Blue Plaques



- 1 Chapel-en-le-Frith**
Dedicated to John Axon and John Creamer. The former, a steam train driver, was posthumously awarded the George Cross after sacrificing his life to prevent a disaster.
- 2 Marple**
Celebrates Agatha Christie's character Miss Marple, which was inspired by the name of the town.
- 3 Morpeth**
Home to a prestigious National Railway Heritage Awards blue plaque for the refurbishment of the station in 2020.
- 4 Glossop**
Details the station's history, which opened in 1845 by the Sheffield, Ashton-Under-Lyne & Manchester Railway, this station and the branch line from Dinting were built privately by the Duke of Norfolk.
- 5 Stalybridge**
Pays homage to the unique buffet bar which dates from the late Victorian era and still has many of its original features. There is also a tribute to Fred Wood, who heroically averted a rail disaster in 1907.
- 6 Hexham**
Marks the opening of the station in 1835 by the Newcastle and Carlisle Railway.
- 7 Littleborough**
Friends of Littleborough Station celebrated the station reaching 175 years by unveiling a plaque in 2014.
- 8 Mytholmroyd**
Celebrates the restoration of the Victorian station building into a community hub.
- 9 Newton-Le-Willows**
Honors William Huskisson MP who is known as the world's first widely reported railway passenger casualty as he was run over and fatally wounded by Robert Stephenson's pioneering locomotive Rocket.
- 10 Edge Hill**
Commemorates the history of the station, which is considered among the oldest passenger railway station in the world.
- 11 Grange-over-sands**
This plaque is dedicated to the history of the station and its architecture, which is thought to be based on the top floor of the nearby Grange Hotel.
- 12 Knaresborough**
Marks the station's National Heritage Railway Award for the transformation of storage rooms, which are now a popular micropub.
- 13 Altrincham**
Commemorates Private William (Bill) Speakman who was awarded the Victoria Cross for Gallantry for bravery during the Korean War.
- 14 Ashburys**
Celebrates the life of Paul Abell, a railway historian and journalist.
- 15 Preston**
Marks the 50th anniversary since the last steam train ran on a main line service in 1968.
- 16 Ulverston**
Highlights the Grade II Listed station building, which was designed by Paley & Austin, Lancaster architects, for the Furness Railway and opened in 1874.

