



# ShIPLEY

## West Yorkshire

### STATION PROFILE

1M ANNUAL FOOTFALL\*

19,000+ AV. WEEKLY FOOTFALL






TOP 10 BUSIEST NORTHERN STATIONS! 

ShIPLEY railway station serves the market town of ShIPLEY in West Yorkshire, it is located 5km north of Bradford Forster Square. The station is mainly used by commuters between Leeds and Bradford. One of the key attractors to ShIPLEY is the outdoor market which is open three days a week on Mondays, Fridays, and Saturdays, bringing a number of leisure travellers to the station

#### NEARBY ATTRACTIONS

-  ShIPLEY Outdoor Market
-  Go Bowling
-  ShIPLEY Central Park

#### GOOD TO KNOWS

-  Toilets
-  Frequent Trains
-  Peak times 07:00 – 09:00 and 15:00 and 18:00
-  Town Centre Location
-  High commuter traffic

### POP-UP RETAIL OPPORTUNITY

#### SITE – STATION FRONT

The station front offers a large open-spaced area which could be utilised to set up a pop-up retail outlet. Passengers enter and exit the station via the front doors meaning that footfall around this area is extremely high. The station is heavily used by commuters meaning that footfall is extremely high in peak times, a product targeting this demographic could be highly successful.



#### STATION INFORMATION

Staffed Station  
Open from 05:50 – 22:00

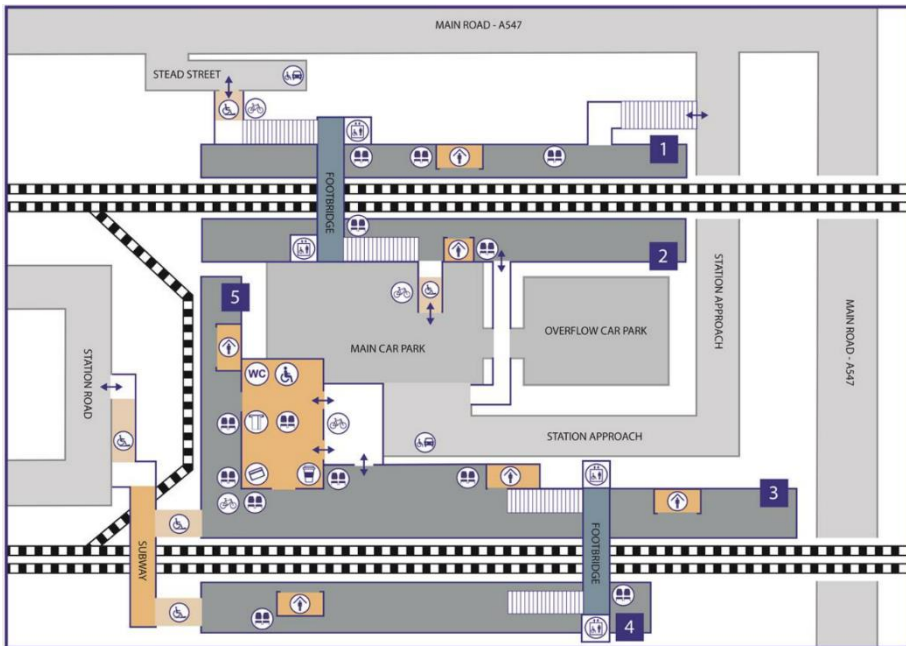
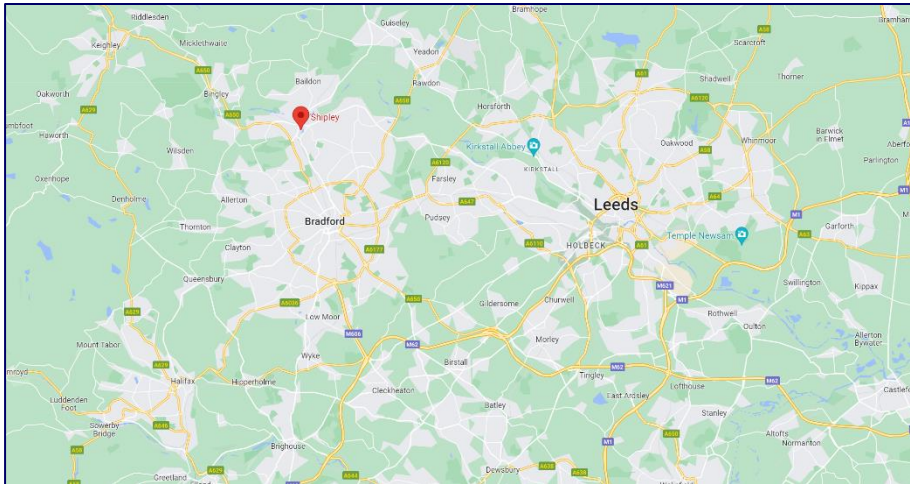
#### CURRENT RETAIL OFFER

Cafe

\*ANNUAL FOOTFALL DATA – OFFICE OF RAIL AND ROAD 2021/22



## LOCATION & MAP OF THE STATION



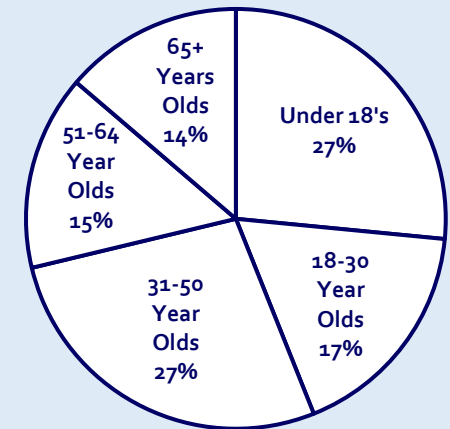
### STATION AMENITIES

- ✓ Lighting
- ✓ Parking Available
- ✓ Water Supply
- ✓ Power available on request

### LOCAL DEMOGRAPHICS

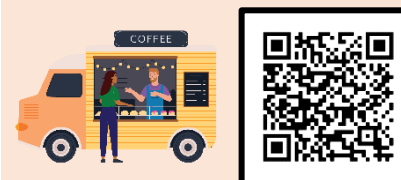
- Average Household Income: £36,616
- Typical Occupation: Professionals
- Households with no car: 31%
- Level 4 Qualifications or above: 22%

Total Population: 232,353



### POP-UP OPPORTUNITIES

To enquire about pop-up retail opportunities, contact Space & People by using the QR code or press [here](#).



### PERMANENT OPPORTUNITIES

To enquire about permanent opportunities, contact Lambert Smith Hampton by using the QR code or press [here](#).

